



ROMBLON STATE UNIVERSITY
BIDS AND AWARDS COMMITTEE

Community Outreach Center, RSU-Main Campus, Liwanag, Odiangan, Romblon 5505
 Telephone: (042) 567-5952
 Email: bac@rsu.edu.ph
 Website: rsu.edu.ph



Management System
 ISO 9001:2015



www.tuv.com
 ID 900018803

TECHNICAL SPECIFICATIONS

Solicitation No. RSU-2024-11-090
ABC: PhP122,025.00

Supply and Delivery of Laboratory Equipment for the College of Education of Romblon State University

ITEM NO.	UNIT	ITEM DESCRIPTION	QTY	STATEMENT OF COMPLIANCE ¹
1	set	<p>100 pcs Parasitology Prepared Slides, recommended specimen are the following:</p> <ul style="list-style-type: none"> Bloodstream Trypanosomes Smear Giardia Lamblia Trophozoite W. Trichonomas Vaginalis Trophozoites W.M. Toxoplasma Gondii Trophozoites W.M. Malay Microfilaria W.M Pneumocysis Carinii Cysts W.M. Egg of Clonorchis Sinensis W.M (Natural Color) Egg of Fasciola Hepatica W.M Ixodes Adult W.M Egg of Paragonimus Westermani (Natural Color) W.M. Schistosoma Japonicum (Female) W.M. Schistosoma Japonicum (Male) W.M. Sexual Mosaic of Schistosoma Japonicum W.M. Eggs of Schistosoma Japonicum W.M. (Natural Color) Miracidium of Schistosoma Japonicum W.M. Balantidium Coli Cysts W.M. Balantidium Coli Trophozoite W.M. Mixed Eggs W.M. Egg of Spirometra Mansoni (Natural Color) Hook Taenia Solium Immature Proglottid W.M. Taenia Solium Eggs W.M. (Natural Color) Egg of Hymenolepis Nana Toxoplasma Gondii Mansoni Spirometra Immature Proglottid Mansoni Spirometra Mature Proglottid Mansoni Spirometra Gravid Proglottid Ascaris Fertilized Egg W.M. (Natural Color) Ascaris Unfertilized Eggs W.M. (Natural Color) 	1	

¹ [Bidders must state here either “Comply” or “Not Comply” against each of the individual parameters of each Specification stating the corresponding performance parameter of the equipment offered. Statements of “Comply” or “Not Comply” must be supported by evidence in a Bidders Bid and cross-referenced to that evidence. Evidence shall be in the form of manufacturer’s un-amended sales literature, unconditional statements of specification and compliance issued by the manufacturer, samples, independent test data etc., as appropriate. A statement that is not supported by evidence or is subsequently found to be contradicted by the evidence presented will render the Bid under evaluation liable for rejection. A statement either in the Bidder’s statement of compliance or the supporting evidence that is found to be false either during Bid evaluation, post-qualification or the execution of the Contract may be regarded as fraudulent and render the Bidder or supplier liable for prosecution subject to the applicable laws and issuances.]



ROMBLON STATE UNIVERSITY

BIDS AND AWARDS COMMITTEE

Community Outreach Center, RSU-Main Campus, Liwanag, Odiongan, Romblon 5505
 Telephone: (042) 567-5952
 Email: bac@rsu.edu.ph
 Website: rsu.edu.ph



Management System
 ISO 9001:2015



www.tuv.com
 ID 900018803

		<ul style="list-style-type: none"> • Insect W.M. • Ascaris Tail End W.M. (Male) • Ascaris Male T.S • Ascaris Female T.S • Ascaris Male and Female T.S • Whipworm Eggs W.M (Natural Color) • Egg of Ancylostoma Duodenale • Trichinella Larvae Cysts Sec. (He) • Trichinella Larvae W.M • Anopheles Eggs W.M. • Culex Eggs W.M. • Aedes Eggs W.M. • Anopheles Pupae W.M. • Culex Pupae W.M. • Aedes Pupae W.M. • Anopheles Larvae W.M. • Culex Larvae W.M. • Aedes Larvae W.M. • Anopheles (Female) Mouthparts W.M. • Anopheles (Male) Mouthparts W.M. • Culex (Female) Mouthparts W.M. • Culex (Male) Mouthparts W.M. • Aedes (Female) Mouthparts W.M. • Aedes (Male) Mouthparts W.M. • Housefly Mouthparts W.M. • Fleas Adult W.M. (Flea W.M.) • Housefly Foot W.M. • Fly Larvae Poststigma W.M • Macracanthorynchus Hirudinaceus Eggs W.M. (Natural Color) • Canine Hookworm Eggs • Canine Tapeworm Eggs • Taenia Solium Mature Proglottid W.M. • Taenia Solium Immature Proglottid W.M. • Taenia Solium Pregnancy Proglottid W.M. • Eggs of Taenia Solium • Adult Fasciolopsis Buski Sec. • Adult of Fasciola Hepatia Section • Clonorchis Sinensis Adults W.M. • Egg of Fasciolopsis Buski W.M. (Natural Color) • Diphylobothrium Latum Immature Proglottid W.M. • Diphylobothrium Latum Mature Proglottid W.M. • Diphylobothrium Latum Pregnancy Proglottid W.M. • Pulex W.M. • Amoeba Proteus W.M. • Fasciolopsis Sec. • Fasciola Hepatica Liver Sec. • Hydatid Sad W.M. (Former Head Larva) • Infectious Ascaris Eggs • Ascaris Deproteinized Membrane Fertilized Egg (Natural Color) • Cysticercus Cellulosae Sec. 		
--	--	--	--	--



ROMBLON STATE UNIVERSITY

BIDS AND AWARDS COMMITTEE

Community Outreach Center, RSU-Main Campus, Liwanag, Odiangan, Romblon 5505
 Telephone: (042) 567-5952
 Email: bac@rsu.edu.ph
 Website: rsu.edu.ph



Management System
 ISO 9001:2015



www.tuv.com
 ID 900018803

		<ul style="list-style-type: none"> • Promastigote of Leishmania Donovanii W.M • Taenia Saginata, Ova in Faeces W.M. • Mixed Eggs W.M. (Trematodes Eggs) • Mixed Eggs W.M. (Tapeworm Eggs) • Mixed Eggs W.M. (Nematode Eggs) • Eggs of Enterobius W.M. (Natural Color) • Without Hook Taenia Saginata Immature Proglottid W.M • Eggs of Trichuris W.M. • Toxoplasma Gondii Cysts W.M • Hard Tick (Ixodes) W.M • Cryptosporidium • Plasmodium Vivax W.M • Plasmodium Flaciparum W.M • Balantidium Coli Cysts W.M • Balantidium Coli Trophozoite W.M • Trichinella Spiralis Muscle Sec. • Taenia Ovis Segments T.S • Pregnancy Proglottid of Taenia Ovis W.M. • Mature Proglottid of Taenia Ovis W.M. • Trichomonas Vaginalis, Smear • Leishmania Donovanii W.M • Promastigote of Lei <p>(please see attached picture in Annex A)</p>		
2	set	<p>30 pcs Human Bacteria Microorganism Prepared Glass Slides, recommended specimen are the following:</p> <ul style="list-style-type: none"> • Gonorrhoeae Cocci Smear • Typhoid Bacillus Smear • Diphtheria Bacilli Smear • Yellow Micro-Cocci Smear • Mycobacterium Tuberculosis Smear • Pseudomonas Aeruginosa Smear • Bordetella Pertussis Smear • Perfringens Bacilli Smear • Tetanus Bacilli Smear • Bacillus Anthracis Smear • Actinomycetes • Albicans Cocci Smear • Vibrio Cholerae Fitted Sheet • Shigella Dysenteriae • Cryptococcus Neoformans Fitted Sheet • Neisseria Gonorrhoeae Smear • Bacterial Type of Smear • Aureus Smear • Human Oral Bacteria Smear • E. Coli Smear • Bacillus Subtilis Smear • The Actinomycetes Installed Piece • Golden Yellow Staphylococcus Smear • Quadruple Cocci Smear • Ordinary Deformation of Bacterial Smear • Bacteria in the Yogurt Chain Smear • Thuringiensis Bacillus Smear 	1	



ROMBLON STATE UNIVERSITY
BIDS AND AWARDS COMMITTEE

Community Outreach Center, RSU-Main Campus, Liwanag, Odiangan, Romblon 5505
 Telephone: (042) 567-5952
 Email: bac@rsu.edu.ph
 Website: rsu.edu.ph



Management System
 ISO 9001:2015



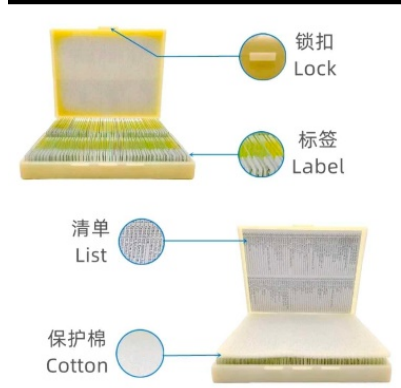
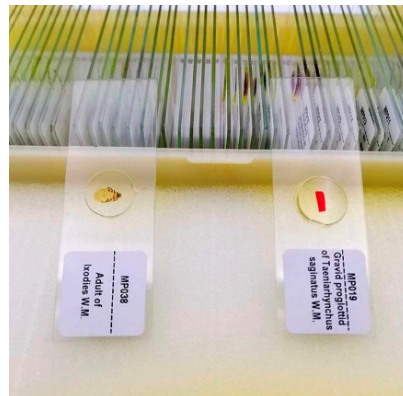
www.tuv.com
 ID 900018803

		<ul style="list-style-type: none"> • Acetic Acid Bacteria Smear • Proteus Bacili Simear • Eight Stacked Cocci Smear <p>(please see attached picture in Annex A)</p>		
3	unit	<p>130 EQ Telescope</p> <ul style="list-style-type: none"> • Optical Design: Newtonian Reflector • Aperture: 130 mm (5.12 in) • Focal Length: 650 mm (25.59 in) • Focal Ratio: 5 • Eyepiece 1: 20 mm (0.79 in), yields 32.5x magnification • Eyepiece 2: 10 mm (0.39 in), yields 65x magnification • Mount Type: CG-3 Equatorial Mount • Optical Coatings: Aluminum • Weight: 24 lb (10.89 kg) • 20 mm Eyepiece with Built-In Erect Image Corrector and 33x Magnification • 10 mm Eyepiece with 65x Magnification • 1.25” steel tripod with accessory tray <p>(please see attached picture in Annex A)</p>	2	
4	unit	<p>130 EQ Single Axis Motor Drive Corrector for Telescope Equatorial Mount; Dimensions: 12.7 x 10.2 x 7.6 cm, 839 g</p> <p>(please see attached picture in Annex A)</p>	1	
5	unit	<p>Telescope Eyepiece Kit: eyepieces, a 2X Barlow Lens, six colored filters to improve observations of the planets, a Moon filter, a collimator and a foam-fitted aluminum carry case</p> <p>(please see attached picture in Annex A)</p>	1	
TOTAL			6	

ANNEX A

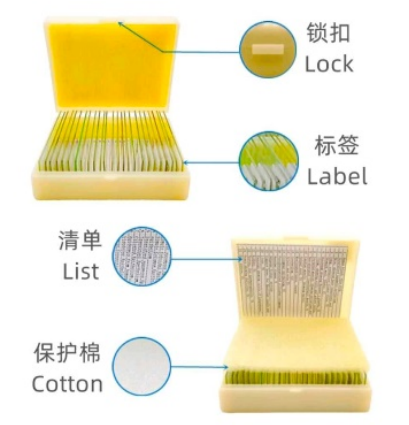
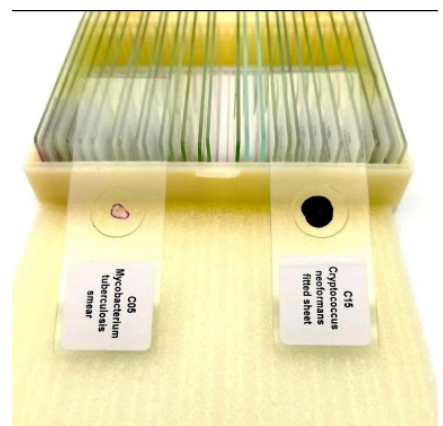
Item No. 1

List of Bacteria	
1. Gonorrhoeae Cocci Smear	11. Bacillus Anthracis Smear
2. Typhoid Bacillus Smear	12. Bacillus Subtilis Smear
3. Diphtheria Bacilli Smear	13. Bacillus Anthracis Smear
4. Yellow Micro-Cocci Smear	14. Bacillus Anthracis Smear
5. Mycobacterium Tuberculosis Smear	15. Bacillus Anthracis Smear
6. Pseudomonas Aeruginosa Smear	16. Bacillus Anthracis Smear
7. Bordetella Pertussis Smear	17. Bacillus Anthracis Smear
8. Perfringens Bacilli Smear	18. Bacillus Anthracis Smear
9. Tetanus Bacilli Smear	19. Bacillus Anthracis Smear
10. Bacillus Anthracis Smear	20. Bacillus Anthracis Smear
11. Actinomycetes	21. Bacillus Anthracis Smear
12. Albicans Cocci Smear	22. Bacillus Anthracis Smear
13. Vibrio Cholerae Fitted Sheet	23. Bacillus Anthracis Smear
14. Shigella Dysenteriae	24. Bacillus Anthracis Smear
15. Cryptococcus Neoformans Fitted Sheet	25. Bacillus Anthracis Smear
16. Neisseria Gonorrhoeae Smear	26. Bacillus Anthracis Smear
17. Bacterial Type Of Smear	27. Bacillus Anthracis Smear
18. Aureus Smear	28. Bacillus Anthracis Smear
19. Human Oral Bacteria Smear	29. Bacillus Anthracis Smear
20. E. Coli Smear	30. Bacillus Anthracis Smear
21. Bacillus Subtilis Smear	
22. The Actinomycetes Installed Piece	
23. Golden Yellow Staphylococcus Smear	
24. Quadruple Cocci Smear	
25. Eight Stacked Cocci Smear	
26. Ordinary Deformation Of Bacterial Smear	
27. Bacteria In The Yogurt Chain Smear	
28. Thuringiensis Bacillus Smear	
29. Acetic Acid Bacteria Smear	
30. Proteus Bacilli Smear	

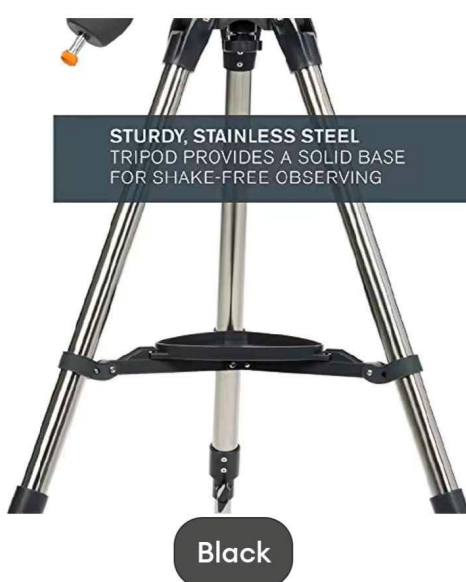
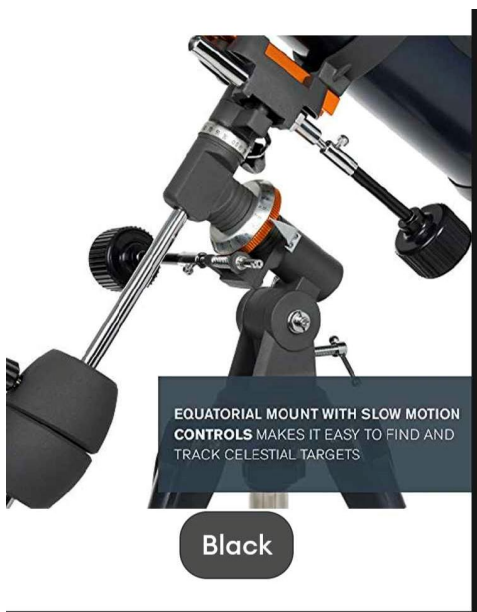


Item No. 2

30pcs Human Bacteria	
1. Gonorrhoeae Cocci Smear	11. Bacillus Anthracis Smear
2. Typhoid Bacillus Smear	12. Bacillus Subtilis Smear
3. Diphtheria Bacilli Smear	13. Bacillus Anthracis Smear
4. Yellow Micro-Cocci Smear	14. Bacillus Anthracis Smear
5. Mycobacterium Tuberculosis Smear	15. Bacillus Anthracis Smear
6. Pseudomonas Aeruginosa Smear	16. Bacillus Anthracis Smear
7. Bordetella Pertussis Smear	17. Bacillus Anthracis Smear
8. Perfringens Bacilli Smear	18. Bacillus Anthracis Smear
9. Tetanus Bacilli Smear	19. Bacillus Anthracis Smear
10. Bacillus Anthracis Smear	20. Bacillus Anthracis Smear
11. Actinomycetes	21. Bacillus Anthracis Smear
12. Albicans Cocci Smear	22. Bacillus Anthracis Smear
13. Vibrio Cholerae Fitted Sheet	23. Bacillus Anthracis Smear
14. Shigella Dysenteriae	24. Bacillus Anthracis Smear
15. Cryptococcus Neoformans Fitted Sheet	25. Bacillus Anthracis Smear
16. Neisseria Gonorrhoeae Smear	26. Bacillus Anthracis Smear
17. Bacterial Type Of Smear	27. Bacillus Anthracis Smear
18. Aureus Smear	28. Bacillus Anthracis Smear
19. Human Oral Bacteria Smear	29. Bacillus Anthracis Smear
20. E. Coli Smear	30. Bacillus Anthracis Smear
21. Bacillus Subtilis Smear	
22. The Actinomycetes Installed Piece	
23. Golden Yellow Staphylococcus Smear	
24. Quadruple Cocci Smear	
25. Eight Stacked Cocci Smear	
26. Ordinary Deformation Of Bacterial Smear	
27. Bacteria In The Yogurt Chain Smear	
28. Thuringiensis Bacillus Smear	
29. Acetic Acid Bacteria Smear	
30. Proteus Bacilli Smear	



Item No. 3





Item No. 4



Item No. 5



Name and Signature of the Bidder/Authorized Representative

Name of the Company